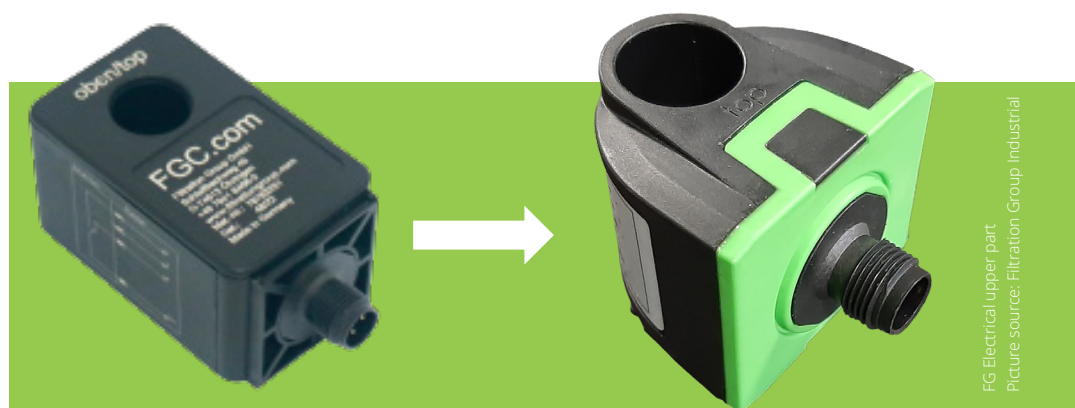


## New version - Electrical upper part for contamination indicators

Filter elements are used economically when their dirt-holding capacity is fully utilized. This is ensured by using filter housings with maintenance indicators. As part of a comprehensive revision, Filtration Group Industrial has developed a new electrical upper part for maintenance indicators. The electrical upper part will be available from June 2023 and will replace the previous model. In addition to the proven technology, the focus was placed on a modern appearance.



PREVIOUSLY

NEW

**Version: S/SO LED M 12x1**  
**Normally open / normally closed contact**  
**2 switching points - LED**  
**Round plug connection M 12 x 1**

- Contact type: normally open / normally closed  
2 switching points
  1. switching point at 75 % of the indication pressure (normally open contact)
  2. switching point at 100 % of the display pressure (NC contact)
- Voltage: 10 - 30 V DC
- Switching current max: 1 A
- Switching capacity max: 20 W
- Protection class DIN EN 60529: IP65 (in plugged and secured condition)
- Plug connection: M 12 x 1, 4-pole



### Info

The following maintenance indicator types are affected by the changeover and will receive the new upper part:

- PiS 3154
- PiS 3155
- PiS 3156
- Retrofit kit # 76300412

It is important to note the replacement of suppressors for inductors in the DC circuit.

### Your Contact

FILCOM GmbH  
 Schönbuchstr. 1  
 D-73760 Ostfildern

Phone: +49 (0) 711-4413322-0  
 Fax: +49 (0) 711-4413322-22  
 Mail: [info@filcom.de](mailto:info@filcom.de)

[www.filcom.de](http://www.filcom.de)