

Filter media

Ti 15

Polyester fleece

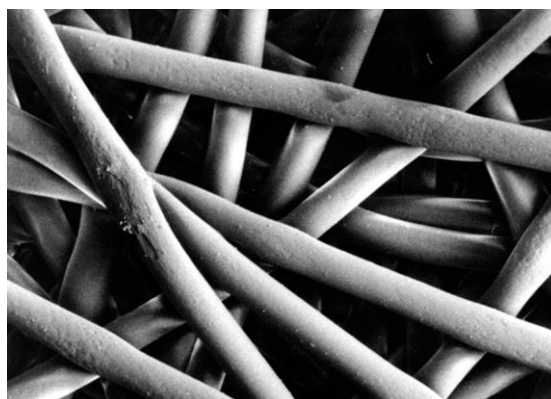
1. Features

Ti 15 is a specially optimised polyester filter media offering improved separation efficiency in combination with high air permeability. The media combines efficient operation with a low pressure loss. That is the reason why Ti 15 is also ideal for filtering the intake air of gas turbines.

The media owes its remarkable stability to the thermoplastic solidification process. No binder is necessary - which is why Ti 15 is also good for many applications in the food processing industry.

Characteristics

- High mechanical strength (elongation at break 70 %)
- Smooth surface
- Good cleanability
- Resistant to a large number of chemicals
- Thermoplastic binding, no binders can be dispensed
- Hydrophobic properties abetting wet cleaning
- Compliance with the requirements of DIN EN 60335-2-69/
Dust class "M" and EN 779 "F8"
- Filter media is conform to regulations (EC) No. 1935/2004 and
(EU) No. 10/2011 as well as FDA 21 CFR CH. I §177.1630 re-
quirements
- Worldwide distribution

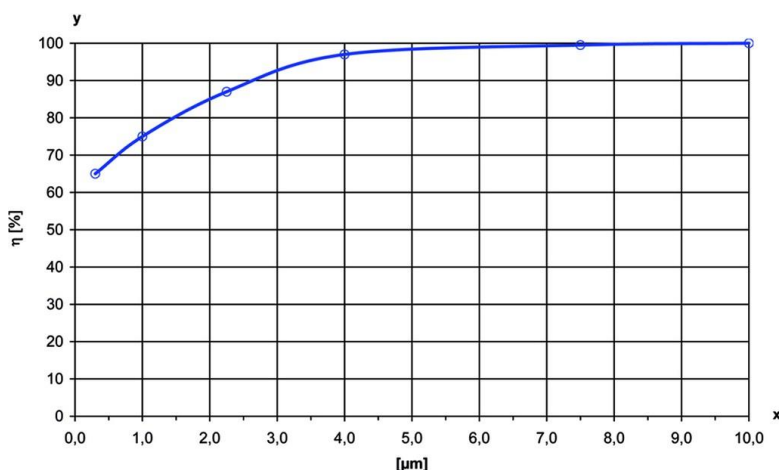


2. Technical data

Type	Media	Media thickness [mm]	Weight [g/m ²]	Air permeability [m ³ /m ² h]	max. operating temperature [°C]	Test certificates/ dust classes
Ti 15	Polyester fleece	0.6	260	580 at Δp 200 Pa	130 (permanent) 150 (peaks)	DIN EN 60335-2-69 "M" EN 779 "F8"

Technical data is subject to change without notice!

3. Filtration efficiency



Filtration efficiency: > 98 %
at 4 μm

Test conditions
Filter surface load: 3.36 m³/m²*min
Mass concentration: 200 mg/m³ Dolomit
Test dust: DRB 20 (Rock flour)

x = Particle size [μm]
y = Filtration efficiency η [%]

These values may vary depending on the nature of the dust, the composition of the gas and the cartridge design.

4. Chemical resistance/mechanical properties

Chemical resistance	Very good	Good	Limited		Mechanical properties	Very good	Good	Limited
Humidity		x			Surface quality (smoothness)	x		
Hydrolysis			x		Stability	x		
Acids		x			Abrasion resistance	x		
Alkalis			x		Cleanability (jet pulse)		x	
Solvents		x			Washability		x	

These properties are of a purely qualitative valuation and depending on the nature of the dust, the composition of the gas and the operating conditions (e.g. temperature).

5. Design

Please contact us for detailed technical information, any open questions and for general expert advice.
Completion of the relevant questionnaire would facilitate in the coordination of all the important parameters.
Comprehensive documentation on our product range, cleaning units and cartridges can be provided.

Your Contact

FILCOM GmbH
Schönbuchstr. 1
D-73760 Ostfildern

Phone: +49 (0) 711-4413322-0
Fax: +49 (0) 711-4413322-22
Mail: info@filcom.de

www.filcom.de

FILCOM[®]
FILTRATION